

Installing the RM SafetyNet Certificate on your Windows computer

The new RM SafetyNet SSL certificate provides an upgraded protection standard (SHA384) for encrypted Google searches on the computer when it's connected to the school network.

This guide gives you simple instructions for downloading and installing the RM SafetyNet certificate manually on a Windows computer.

To install this certificate you need to be logged on as a user with administrator rights on the computer. (If it's your own computer you probably do have administrator rights.)

To download the certificate

If your network manager or teacher hasn't given you the certificate file, here's how you can easily download it yourself:

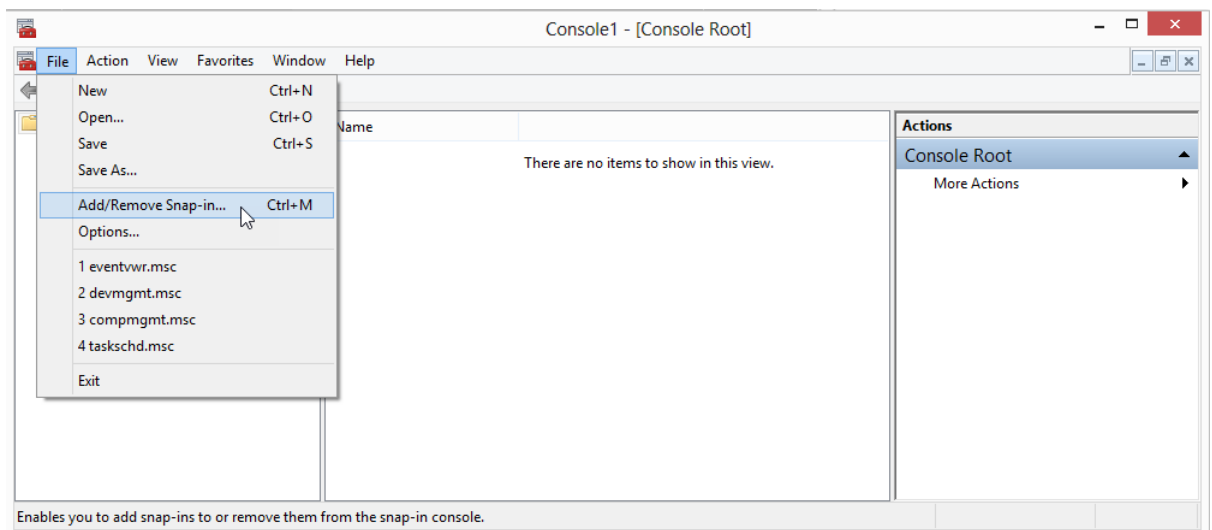
1. At the computer open an internet browser and go to <http://www.rm.com/googlessl>
2. Under **Windows stand-alone** click the **Certificate** link and save the certificate file in a convenient location on your computer - for example, the Downloads folder.

To install the certificate

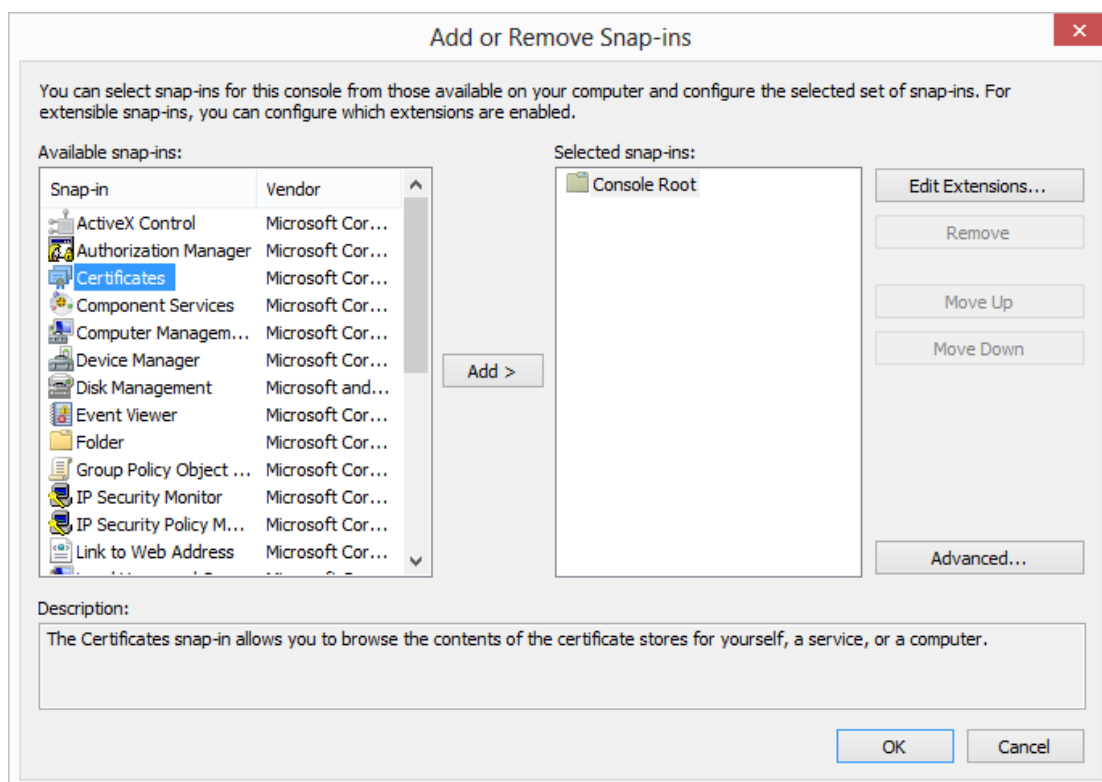
1. At your Start menu or Start screen type **run**, type **mmc** and press **Return**.
(If a User Account Control warning message is displayed, click **Yes** to continue.)

The Microsoft Management Console window is displayed.

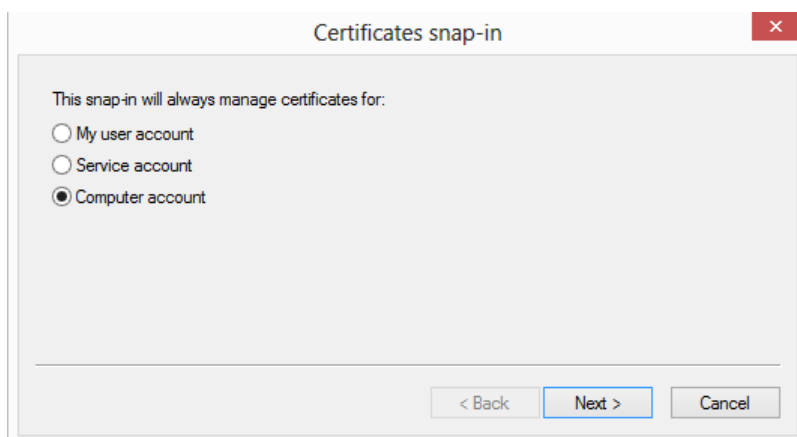
2. In the 'Console...' window, from the **File** menu choose **Add/Remove Snap-in...**



3. In the Add or Remove Snap-ins window, from the left-hand list select **Certificates** and click **Add**.

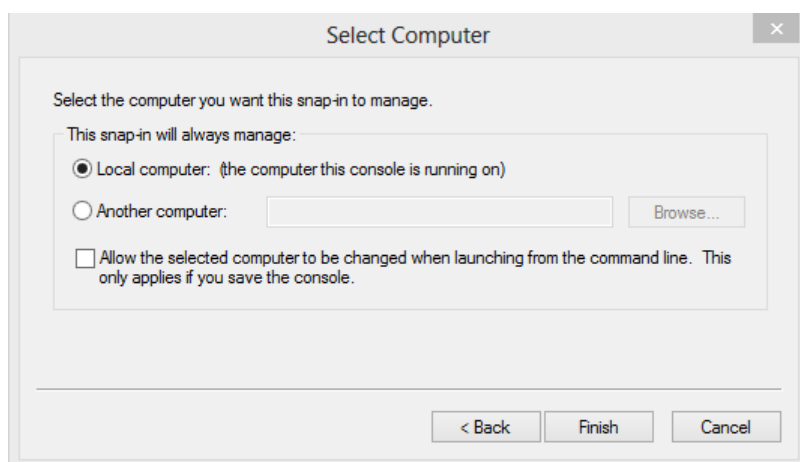


4. Select **Computer** account and click **Next**.

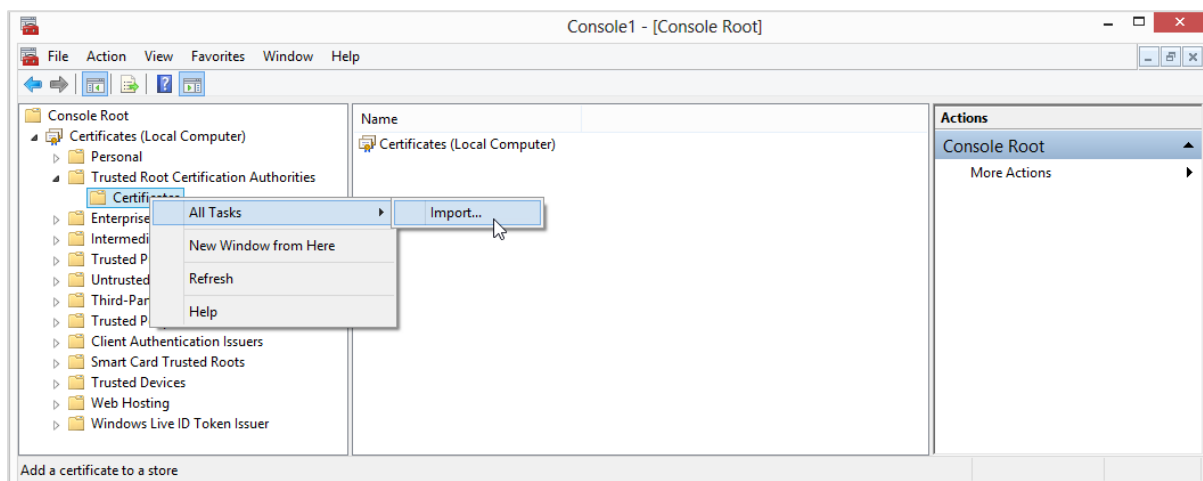


5. At the next screen click **Finish**.

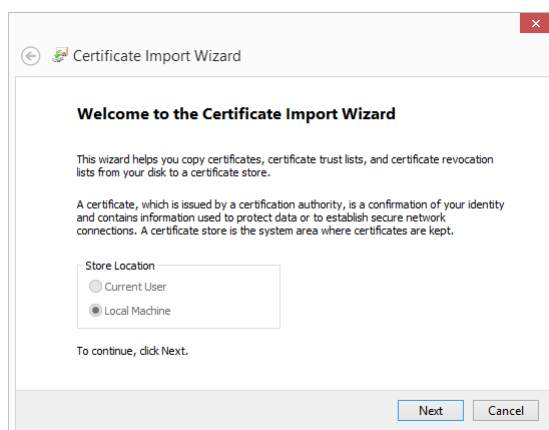
Installing the RM SafetyNet Certificate on your Windows computer



6. Click OK to close the Add or Remove Snap-ins window.
7. In the Console window, expand **Certificates (Local Computer)** and then **Trusted Root Certification Authorities**. Right-click **Certificates** and choose **All Tasks** and then **Import...**

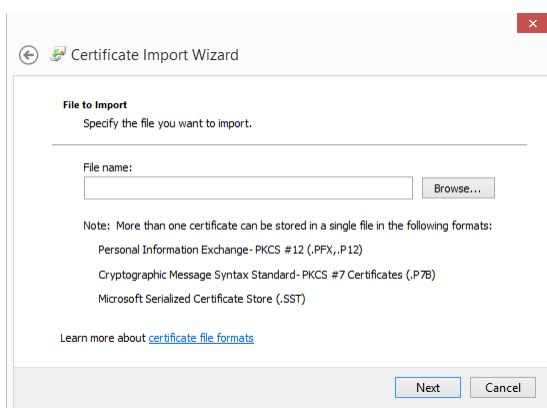


8. In the Certificate Import Wizard window, click **Next**.

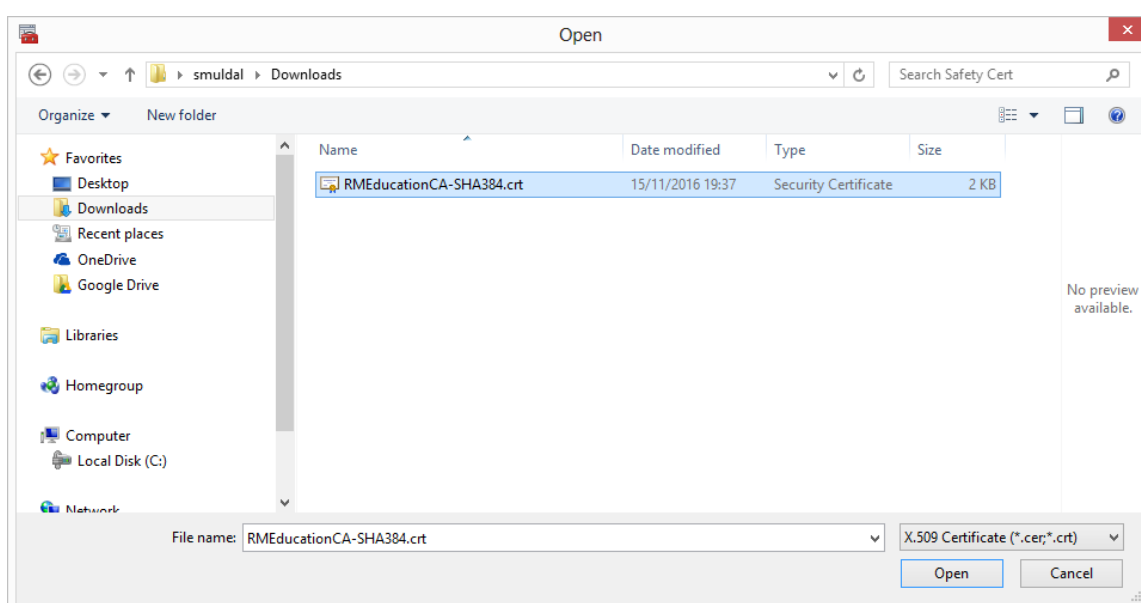


9. Click **Browse**.

Installing the RM SafetyNet Certificate on your Windows computer

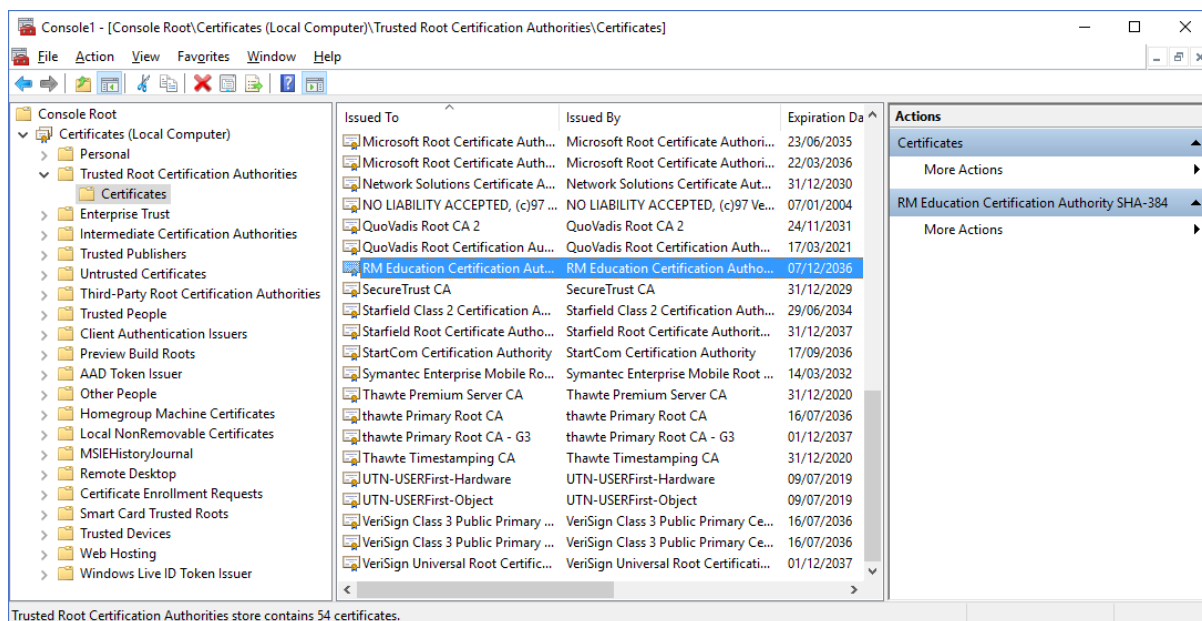


10. In the Open window, browse to the downloaded certificate file **RMEducationCA-SHA384.crt**. Select it and click **Open**.



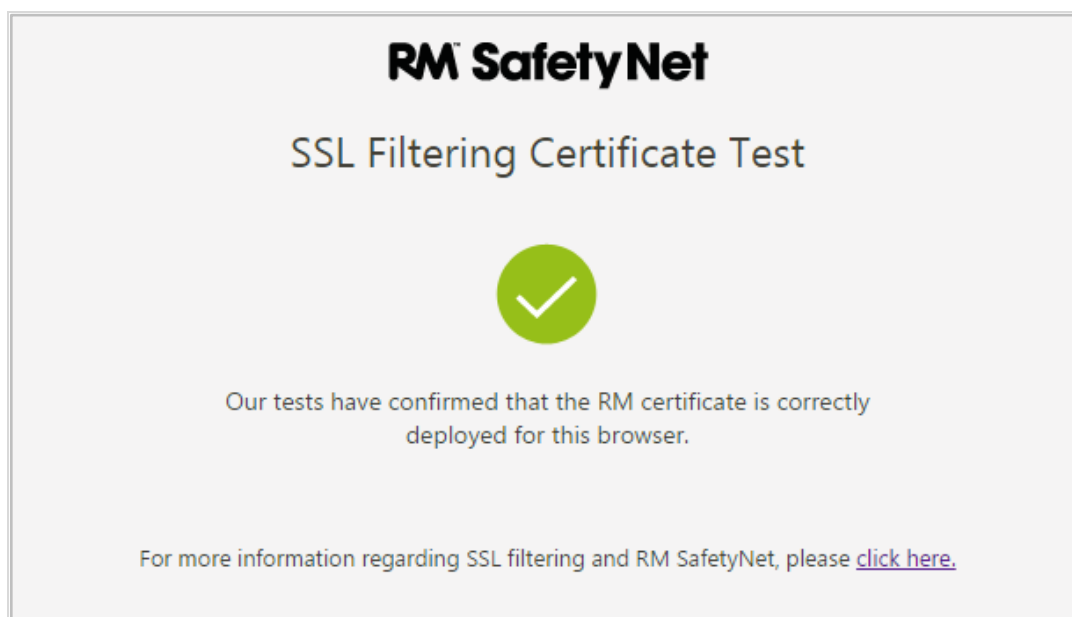
11. Back in the Certificate Import Wizard window, click **Next** and **Next** and **Finish**.
12. At the 'import successful' message, click **OK**.
13. Back in the Console window, in the left-hand pane select **Certificates** (if you can't see it, expand **Console Root**, **Certificates (Local Computer)**, **Trusted Root Certification Authorities**) and check that there is an entry for **RM Education Certification Authority SHA-384** in the list.

Installing the RM SafetyNet Certificate on your Windows computer



14. Ensure that all internet browsers are closed.

15. To check that the certificate is working, open an internet browser and go to <http://certificatecheck.rm.com>.



If your browser passes the test, this computer has the certificate correctly installed.

RM SafetyNet can now provide the latest protection for encrypted Google searches on this computer when it's connected to the school network.